

PURPOSE

This WRC RALLY 1 information applies to ANYONE attending a rally and getting in close contact with the Rally1 cars.

On top of normal care due to a rally car, interactions with the Rally1 car can cause electrical injuries:

electric shock, electric arc, electric discharge as well as chemical risks and the risk of fire

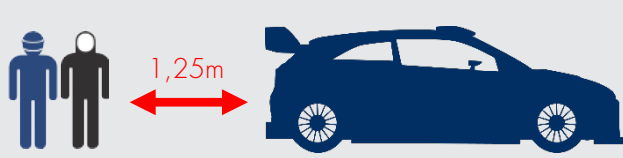
GENERAL INFORMATION



Accident/Incident
Specific to the car



Don't touch the car
If situation is unclear



Keep safe distance
If situation is unclear

HAZARDS



Electrical hazards
800V



Risk of fire



Risk of battery
thermal runaway



Chemical risk
Hazardous gases



Chemical risk
Corrosive liquids

FIRE RISKS



Fire near or inside the car



Keep safe distance
Do not touch

CHEMICAL RISKS

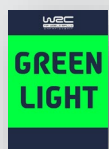


Chemical liquids or hazardous
gases near the car

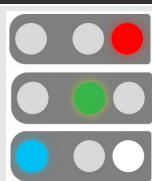


Keep safe distance
Do not touch

SAFETY EQUIPMENT



Safety Board



Safety Lights and sound module



CAR IS UNSAFE – DO NOT TOUCH

CAR IS SAFE – TREAT AS NORMAL

DRIVER TO BE CHECKED BY DOCTOR

RALLY 1 – SAFE CONDITION



Green
safety light status



Vehicle is safe
Act as normal

RALLY 1 – UNSAFE CONDITION



Red or unclear
safety light status

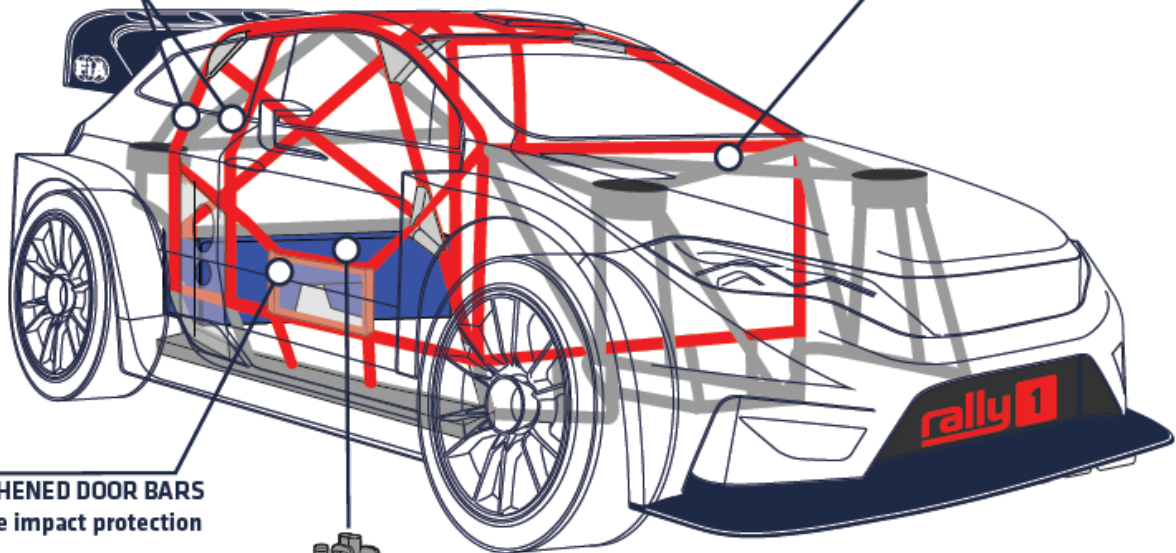


DO NOT TOUCH

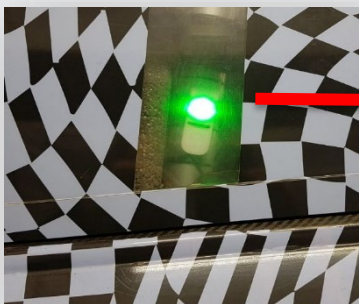
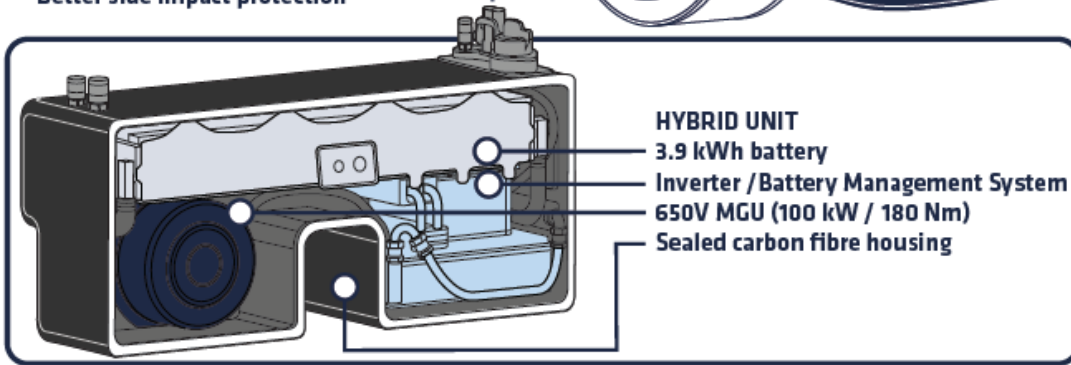
IMPORTANT COMPONENTS ON THE RACECAR

DOUBLE HOOP
Increased roll resistance

SAFETY CELL



STRENGTHENED DOOR BARS
Better side impact protection



SAFETY LIGHTS
RED OR GREEN



HY SYMBOL ON THE DOOR